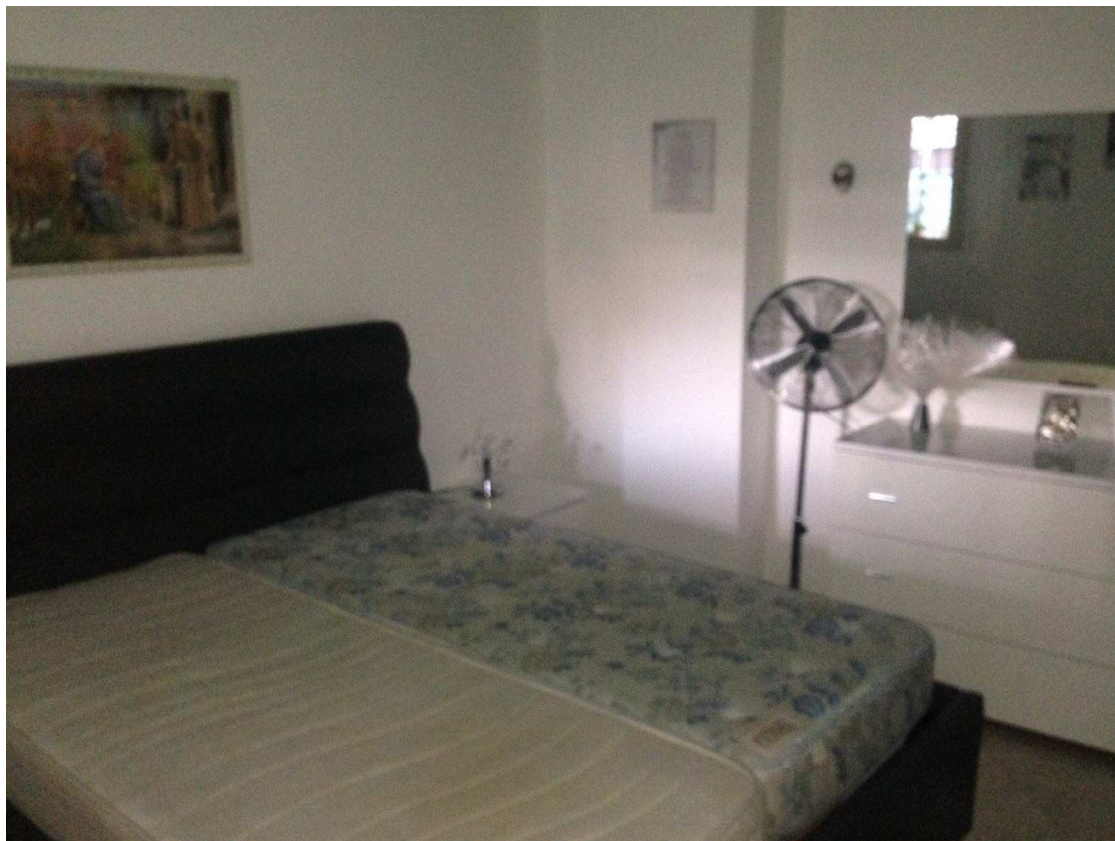
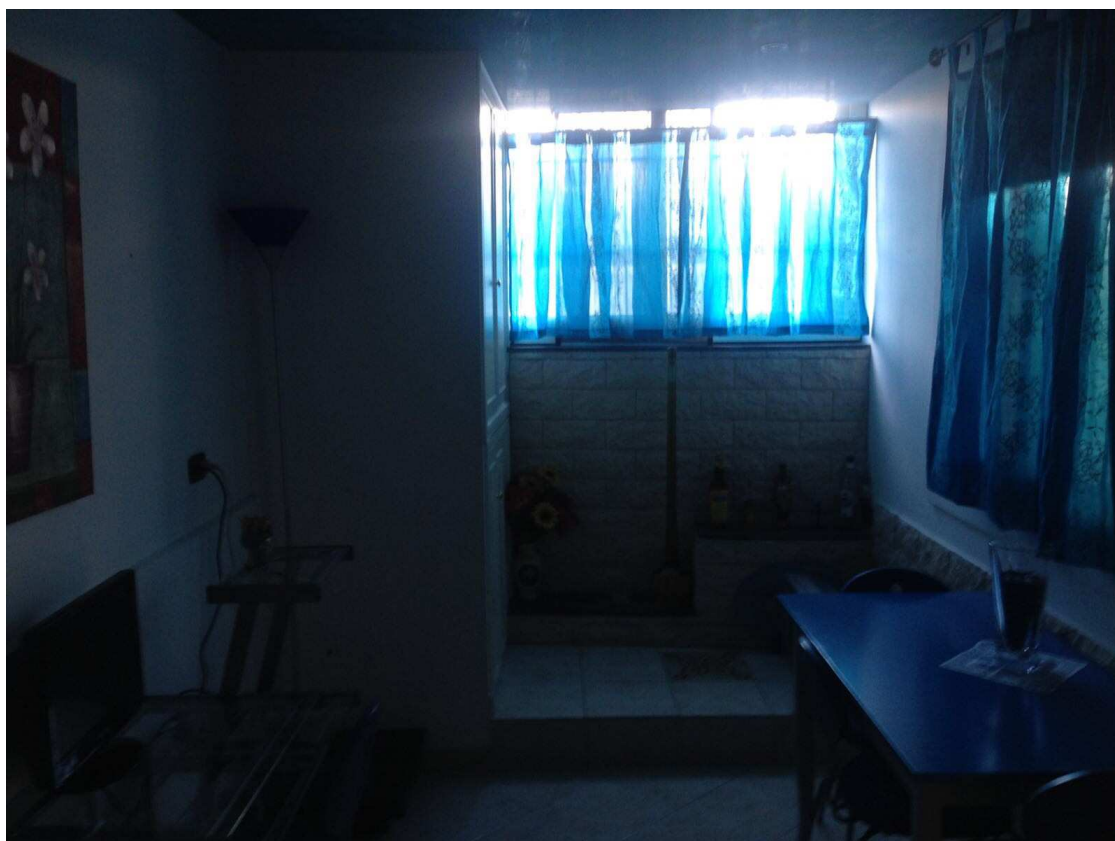


**Foto n°1 :**



*- Camera da letto -*

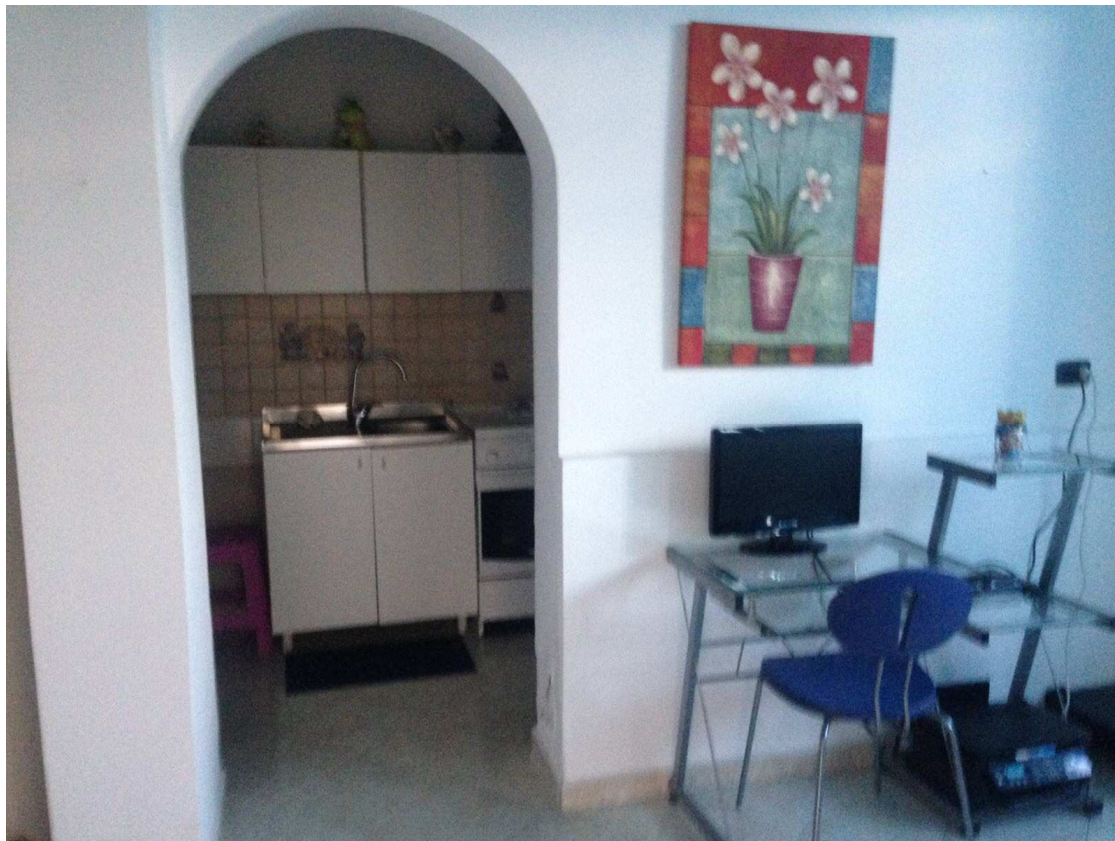
**Foto n°2 :**



*- Soggiorno-*



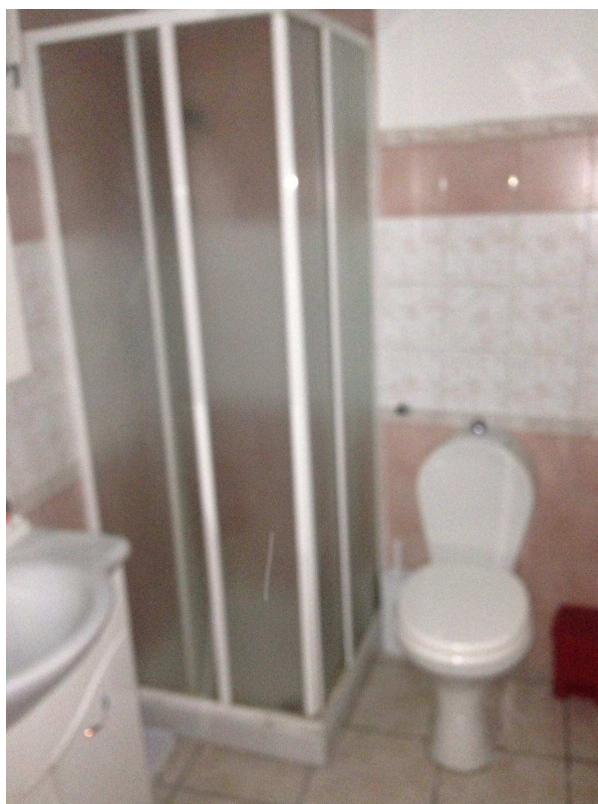
**Foto n°3:**



*- Soggiorno con vista cucina -.*

---

**Foto n°4 :**

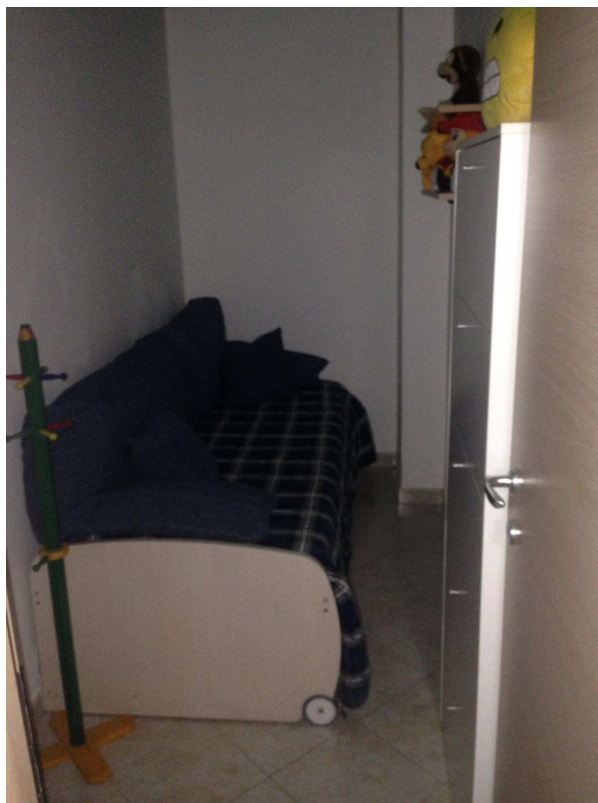


*-Bagno-.*

---



**Foto n°5 :**



*- Ripostiglio-*

**Foto n°6:**



*- Veranda esterna-*



Foto n°7 :



*-Porta di accesso all'immobile-*

